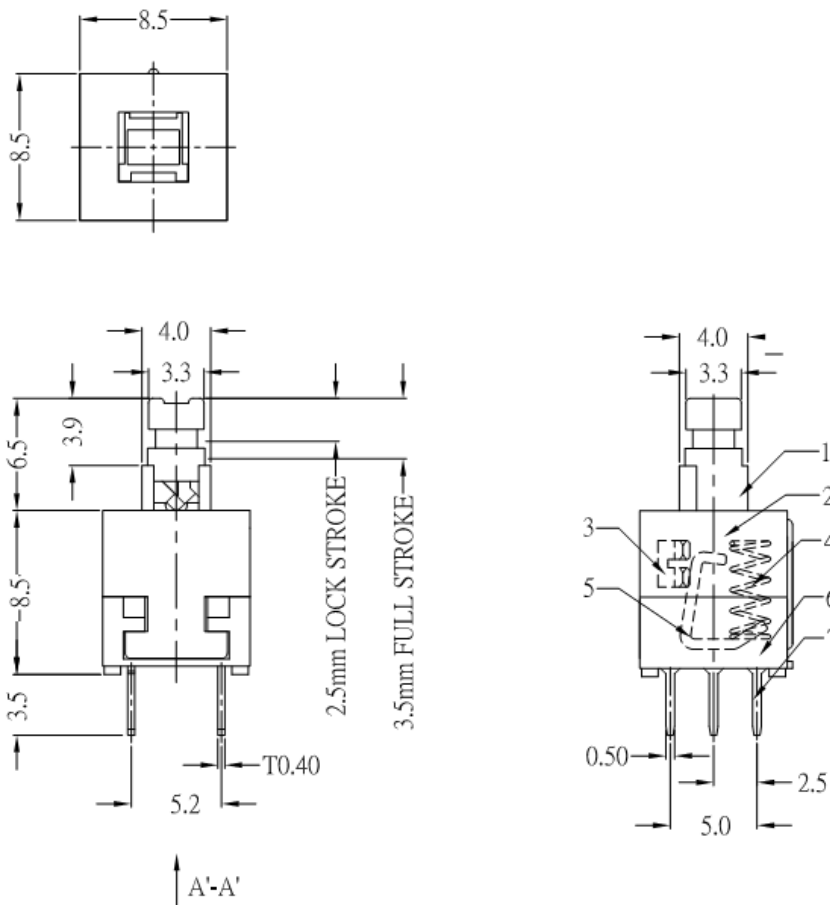




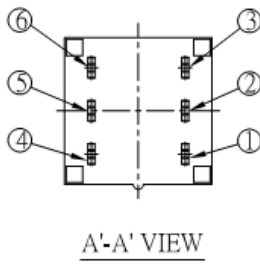
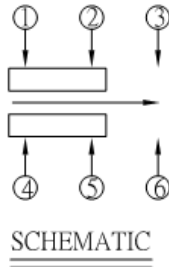
PUSH SWITCH 2Pole 2Way Specifications: RoHS Compliant
Part code: PS-2285-SL = Push to ON, Push to OFF locking switch
Part code: PS-2285-NL = Push to ON, Momentary switch

Drawing:

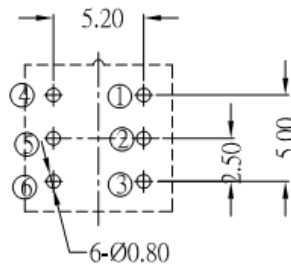




PUSH SWITCH 2Pole 2Way Specifications: RoHS Compliant
Part code: PS-2285-SL = Push to ON, Push to OFF locking switch
Part code: PS-2285-NL = Push to ON, Momentary switch



A'-A' VIEW



Specifications:

1. Operating force: 350 + 50gf
2. Full Travel: 3.5 + 0.2 mm, Lock Travel 2.5 + 0.2mm
3. Contact material: Phosphor Bronze silver plated
4. Operating life: 10,000 cycles
5. Rating: 30V DC 100mA
6. Contact resistance: 30 milli Ohms maximum
7. Insulation resistance: 100 Mohms at 500VDC
8. Proof Voltage: 500 VAC for 1 minute
9. Operating Temperature: -20 to 85 Deg. C
10. General tolerance: +0.2mm